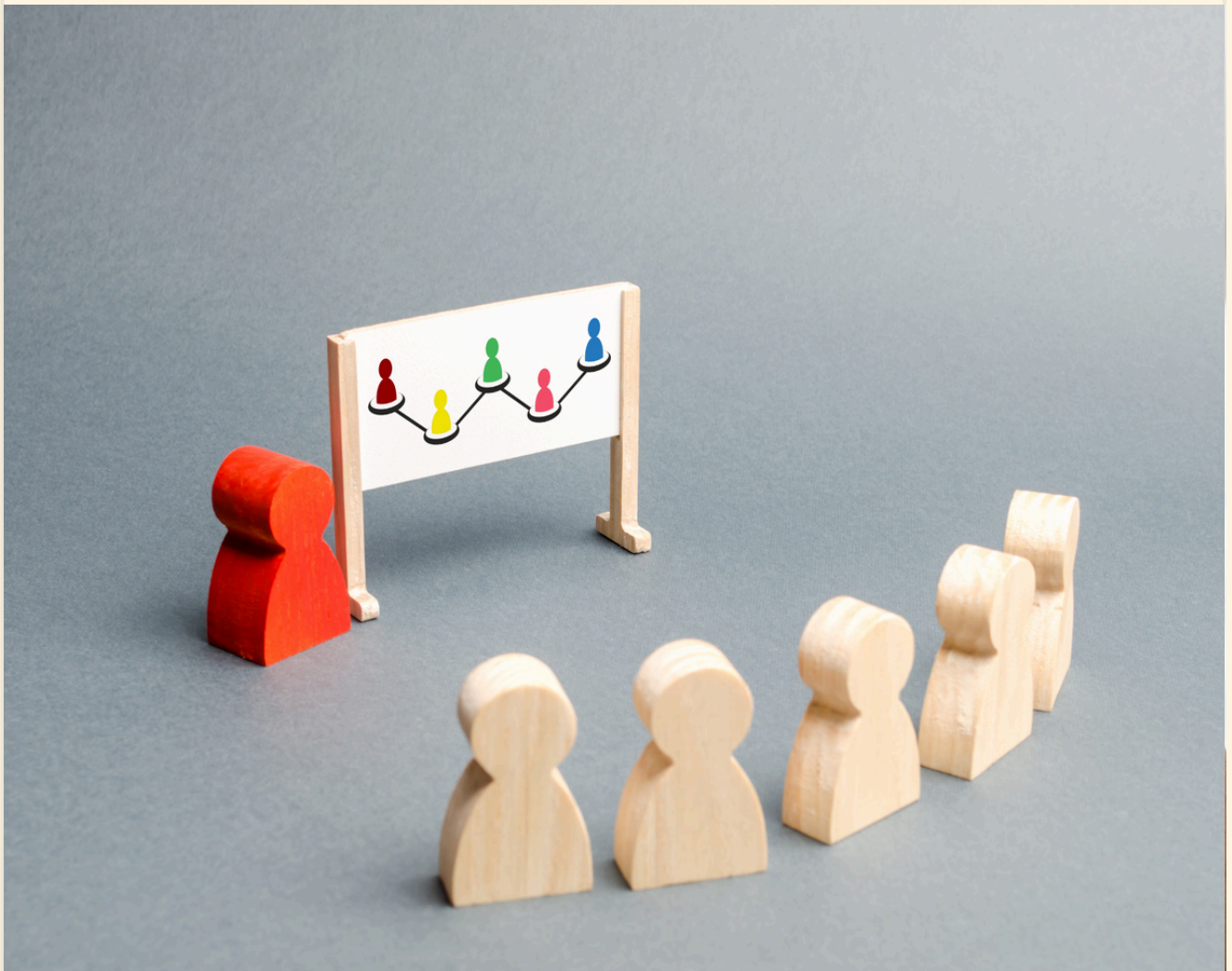


**MOTHER  
FIT**

MIND BODY SOUL

# Cow's Milk Allergy Roadmap for parents

**MOTHER FIT RESOURCE**



# YOUR BABY'S COW'S MILK ALLERGY JOURNEY

The journey for you and your baby after diagnosis of cow's milk allergy can be confusing. For each of the eight Milestones we explain what to expect with advice from experts in allergy, and allergy advocate and mum Nathalie Newman.

Nathalie is a mum who knows only too well the journey you go on after your baby is diagnosed with cow's milk allergy...

When my son was diagnosed I certainly wondered what to do next! I believe that this information will help in providing the support and information you need at this anxious time.

- Nathalie Newman, Allergy mum and advocate

1

**Managing cow's milk allergy:** Cow's milk allergy is one of the most common food allergies in babies and young children1 [\[read more\]](#)

2

**Feeding a child with cow's milk allergy:** The goal of managing cow's milk allergy is to exclude cow's milk and foods containing cows' milk totally for an agreed time frame, with the aim of reintroducing it later4 [\[read more\]](#)

3

**Gut health in babies and children:** The gut may take many weeks to settle down after a diagnosis of milk allergy5 [\[read more\]](#)

4

**The future and allergies:** Most children will become tolerant of cow's milk anywhere from one to five years of age2 [\[read more\]](#)

5

**Weaning:** Babies at risk of allergy may benefit from earlier introduction of weaning foods but not before 17 weeks3 [\[read more\]](#)

6

**Re-introduction of cow's milk protein:** Each baby is different when it comes to re-introducing cow's milk4 [\[read more\]](#)

7

**The milk ladder:** Reintroduction of cow's milk is done gradually, according to something called the 'milk ladder' [\[read more\]](#)

8

**Outgrowing cow's milk allergy:** Fortunately, sensitivity to cow's milk decreases with age1 as most children outgrow their allergy4 [\[read more\]](#)

Published 2022. The information in this toolkit has been prepared by Allergy UK and peer-reviewed by leading experts in cow's milk allergy. It is designed to be a helpful resource to explain further the types of milestones your child may reach after a diagnosis of cow's milk allergy. The guidance provided is based on current best practice, but please note that it is subject to change in the light of new relevant information and it does not replace medical/clinical advice. Always speak to your healthcare professional about any concerns you may have about managing the needs of a child with a cow's milk allergy.

Allergy UK is the operational name of The British Allergy Foundation, a charitable company limited by guarantee and registered in England and Wales, Company no: 4509293, Charity no: 1094231. Registered in Scotland. Charity no: SC039257.

 **AllergyUK**

#ItsTimeToTakeAllergySeriously  
[www.allergyuk.org](http://www.allergyuk.org)

1. Flom JD, Sicherer SH. Epidemiology of cow's milk allergy. *Nutrients* 2019;11:1051. <http://dx.doi.org/10.3390/nu11051051>  
2. Schoemaker et al. Incidence and natural history of challenge-proven cow's milk allergy in European children – EuroPrevall birth cohort. *Allergy* 2015;70:963–972. DOI:10.1111/all.12630  
3. The UK Scientific Advisory Committee on Nutrition (SACN) 2018, [https://assets.publishing.service.gov.uk/government/uploads/system/uploads/attachment\\_data/file/725530/SACN\\_report\\_on\\_Feeding\\_in\\_the\\_First\\_Year\\_of\\_Life.pdf](https://assets.publishing.service.gov.uk/government/uploads/system/uploads/attachment_data/file/725530/SACN_report_on_Feeding_in_the_First_Year_of_Life.pdf)  
4. Luyt D et al. BSACI guideline for the diagnosis and management of cow's milk allergy. *Clinical & Experimental Allergy* 2014;44:642–672. doi: 10.1111/cea.12302  
5. Walsh, J., Meyer, R., Shah, N., Quekett, J., & Fox, A. T. (2016). Differentiating milk allergy (IgE and non-IgE mediated) from lactose intolerance: understanding the underlying mechanisms and presentations. *The British journal of general practice : the journal of the Royal College of General Practitioners*, 66(649), e609–e611.

# YOUR BABY'S COW'S MILK ALLERGY JOURNEY

## Milestone 1: Managing cow's milk allergy

### How do I manage my baby's cow's milk allergy?

If you and your baby have seen your healthcare professional and have been given a diagnosis of cow's milk protein allergy, you may be wondering what to do next. These milestones provide you with information to help you proactively manage your baby's cow's milk allergy and the possible re-introduction of cow's milk into their diet.

“

When my son was diagnosed I certainly wondered what to do next! I believe that this information will really help in providing the support and information you need at this anxious time.

- **Nathalie Newman,**  
Allergy mum and advocate

### What is a cow's milk allergy?

In case you are still wondering what the diagnosis means, here is a short explanation: Cow's milk allergy (also referred to as CMA) is a reaction to the proteins found in cow's milk.<sup>1</sup> Generally, symptoms of an allergic reaction to cow's milk will appear either immediately (within minutes up to one or two hours) after eating or drinking food containing cow's milk protein (suggesting an IgE mediated reaction) or the reaction may be delayed - occurring up to 48 hours later (suggesting a non-IgE mediated reaction).<sup>2</sup> For some babies the reactions may be mixed, appearing immediately and at times, delayed.<sup>1</sup> You will find links to more information at the end of this section.

### What is the difference between immediate and delayed milk allergy?

#### **IMMEDIATE ONSET: 5, 8 Symptoms** appear within one or two hours<sup>1</sup>

- Symptoms usually develop within minutes up to one or two hours after having cow's milk. Very occasionally some infants have difficulty in breathing or become floppy with food allergens and need to seek urgent help, this is rare.
- Immediate reactions to milk can occur at any age, but also consider other common culprits including egg or peanut.
- Can occur with cow's milk, usually when cow's milk-based formula feeds are used as 'top-ups' in a breastfed baby or later when weaning and dairy products (For example, yoghurt) or cow's milk are given.
- Two ways to confirm: Firstly symptoms, such as skin rash and/or swelling with vomiting and/or wheeze, soon after the baby has had cow's milk and secondly, by a healthcare professional taking an allergy focused history and if needed allergy tests like skin prick tests or blood tests.
- The correct medical term is IgE mediated cow's milk allergy.

#### **DELAYED ONSET: 5 Symptoms** appear up to 48 hours later<sup>2</sup>

- Delayed tummy problems for example reflux, diarrhoea, constipation or skin symptoms including eczema, up to 48 hours after having cow's milk, which improves or clears up when cow's milk is stopped and reappears when it's started again.
- Skin prick tests or blood tests are not recommended for delayed reactions.
- The only reliable test is to take cow's milk protein out of the baby's diet or mum's diet if breastfeeding for two to four weeks and to then reintroduce it by ~~re-challenge~~ re-challenge.
- The correct medical term is non-IgE mediated cow's milk allergy.
- Many of the symptoms are also very common in babies who are otherwise well or those with other illnesses, so it is important to get a diagnosis by a healthcare professional.

### The Milestones:

- 1** Managing cow's milk allergy
- 2** Feeding a child with CMA
- 3** Gut health in babies & children
- 4** The future and allergies
- 5** Weaning
- 6** Re-introduction of cow's milk
- 7** The milk ladder
- 8** Outgrowing cow's milk allergy

### Allergy UK Helpline

Mon-Fri, 9am-5pm:

Call: 01322 619 898

Email: [info@allergyuk.org](mailto:info@allergyuk.org)

Visit us at:

**Allergyuk.org**

Published 2021. The information in this toolkit has been prepared by Allergy UK and peer reviewed by leading experts in cow's milk allergy. It is designed to be a helpful resource to explain further the types of milestones your child may reach after a diagnosis of cow's milk allergy. The guidance provided is based on current best practice, but please note that it is subject to change in the light of new relevant information and it does not replace medical/clinical advice. Always speak to your healthcare professional about any concerns you may have about managing the needs of a child with cow's milk allergy.

# YOUR BABY'S COW'S MILK ALLERGY JOURNEY

## Milestone 1: Managing cow's milk allergy

### What does this diagnosis mean for my baby?

The majority of children outgrow milk allergy. Overall, a high percentage of children fully outgrow a milk allergy or gain some tolerance (for example, small amounts of milk protein baked within a biscuit) by the age of five and usually much sooner.<sup>3,4</sup> Children that persist with a milk allergy past the age of five years old are less common but they may still go on to outgrow this in their teenage years.<sup>3</sup>

Your GP or allergy specialist will work with you, usually with the help of a dietitian,<sup>5</sup> to actively manage your child's CMA which will give them the best chance to outgrow their allergy. Read more about this in Milestone 2. Whilst many babies may have immediate relief after removing cow's milk from their diet, for other babies, it can take longer than the two-to-four-week recommended time frame for symptoms to resolve,<sup>5</sup> especially if they have more severe symptoms. It's important to get support during this time. After symptoms have cleared, your healthcare professional may discuss carefully introducing cow's milk protein back into your baby's diet, either through your breast milk, formula choice or baked milk.<sup>5</sup>

**It's not unusual to feel anxious or stressed after receiving the diagnosis. Please seek help if you feel overwhelmed by this stress<sup>3</sup>**

### Where can I get more information?

You will find information about cow's milk allergy on the Allergy UK website [www.allergyuk.org](http://www.allergyuk.org):

- [Allergy UK Factsheet - Does My Child Have a Cow's Milk Allergy?](#)
- [Allergy UK Factsheet - Cow's milk free diet information for babies and children](#)
- [Allergy UK Leaflet: Could It Be Cow's Milk Allergy?](#)

### How can I cope with anxiety about my child's allergy?

Managing your child's allergies can be worrying, but remember that you are not alone.<sup>5</sup> It is very common to feel anxious after this diagnosis but it is possible for you and your baby to lead a normal happy life alongside a food allergy. Your healthcare support team, family, other parents and friends are important supporters in your journey. Planning ahead, especially before going out, can also help to alleviate your concerns.<sup>6</sup> Allergy UK have many resources to help you - Read more about understanding anxiety [here](#).

### Cow's milk allergy is one of the most common food allergies in babies and young children<sup>1</sup>

### What should I do if my baby still has symptoms?

If you are concerned after diagnosis that your baby is still experiencing symptoms, even though you have removed milk from their diet, you should talk to your healthcare professional about your baby's ongoing care. Your healthcare professional may refer you and your baby to a dietitian if your baby's symptoms are mild to moderate. However, if symptoms are severe you may be referred to a children's specialist allergy service.

It's also helpful to record your baby's symptoms in a food allergy and symptoms diary. Your healthcare support team

will use this information to understand the relationship between your baby's symptoms and the food they've had.<sup>7</sup> Recording symptoms will also help your healthcare professional decide if any tests are required and help them to distinguish allergic reactions from other causes and confirm whether it is delayed or immediate onset cow's milk allergy.<sup>7</sup>

### References:

1. Flom JD, Sicherer SH. Epidemiology of cow's milk allergy. *Nutrients* 2019;11:1051. <http://dx.doi.org/10.3390/nu11051051>
2. Walsh J, Meyer R, Shah N, et al. Differentiating milk allergy (IgE and non-IgE mediated) from lactose intolerance: understanding the underlying mechanisms and presentations. *Br J Gen Pract* 2016;66:e609-11. <http://dx.doi.org/10.3399/bjgp16X686521>
3. Spergel J. 2013. Natural history of cow's milk allergy. *J Allergy and Clin Immunol* 131 (3): 813-814
4. Schoemaker AA, Sprickelman AB, Grimshaw KE, et al. Incidence and natural history of challenge-proven cow's milk allergy in European children - EuroPrevall birth cohort. *Allergy* 2015;70:963-72. <http://dx.doi.org/10.1111/all.12630>
5. iMAP Milk Allergy Guideline - Initial Fact Sheet for Parents. Oct 2016. Available at: [https://gpln.files.wordpress.com/2019/10/imap\\_patient\\_factsheet\\_original.pdf](https://gpln.files.wordpress.com/2019/10/imap_patient_factsheet_original.pdf) (Accessed Sept 2020)
6. Dr Christina Jones, Coping with Anxiety Factsheet [https://www.allergyuk.org/assets/000/003/010/Coping\\_with\\_Anxiety\\_Factsheet\\_original.pdf?1588164939](https://www.allergyuk.org/assets/000/003/010/Coping_with_Anxiety_Factsheet_original.pdf?1588164939)
7. Venter C, Brown T, Meyer R, et al. Better recognition, diagnosis and management of non-IgE-mediated cow's milk allergy in infancy: iMAP—an international interpretation of the MAP (Milk Allergy in Primary Care) guideline. *Clin Transl Allergy* 2017;7:26. <http://dx.doi.org/10.1186/s13601-017-0162-y>
8. Luyt D, et al. BSACI guideline for the diagnosis and management of cow's milk allergy. *Clinical & Experimental Allergy*, 44, 642-672.

### Allergy UK Helpline

Mon-Fri, 9am-5pm:

Call: 01322 619 898

Email: [info@allergyuk.org](mailto:info@allergyuk.org)

Visit us at:

**Allergyuk.org**



# YOUR BABY'S COW'S MILK ALLERGY JOURNEY

## Milestone 2: Feeding a child with a cow's milk allergy

### Why change my baby's feeding?

You will have been advised to avoid feeding your baby anything that contains cow's milk protein.<sup>1</sup> However, you are probably aware that many of the foods we consume daily contain cow's milk, which provides an important source of energy, protein, vitamins and minerals both for you and your growing baby.<sup>2</sup> But the fact is that it also contains the protein that causes allergy in some people. So, it's important to understand that avoiding cow's milk is not a long-term solution. The aim is to reintroduce milk protein when possible and this Roadmap is designed to help guide you through that process.

The goal of managing cow's milk allergy is to exclude cow's milk and foods containing cows' milk totally for an agreed time frame, with the aim of reintroducing it later. Often milk products can begin to be introduced from 12 months of age, although this does vary.

When your child is at the stage where their tolerance to cow's milk protein can be assessed, then cow's milk may be carefully reintroduced, step by step, into your baby's diet under the supervision of your healthcare professional.<sup>3</sup> The way in which this is done is different depending on whether your child has an immediate or delayed reaction to milk, you will find more about this in Milestones 6 and 7.

### Should I continue breastfeeding?

While it is rare, some babies can have an allergic reaction to cow's milk protein consumed by Mum and passed to her baby through her breastmilk.<sup>1</sup> If you have been able to successfully breastfeed then we encourage you to continue because of the many benefits for both you and your baby. Breastfeeding provides all the nourishment that a young baby needs, as well as many other benefits, such as antibodies. The nutrients in breast milk are easily digested and absorbed and your milk continually changes to meet your baby's needs. If you are breastfeeding and your baby has allergic symptoms (for example diarrhoea and/or eczema), discuss a cow's milk-free diet with a dietitian because it is important

that breastfeeding mums have a healthy balanced diet.<sup>2</sup> It is recommended that you take Vitamin D (10 mcg) and calcium (1000 mg) supplements until you are able to speak to a dietitian.<sup>4,5</sup> Vitamin D aids the absorption of calcium and helps to keep teeth and bones healthy. In the UK all breastfed babies from birth to one year of age should be given a daily supplement of 8.5-10mcg of vitamin D. 15

**If you have been able to breastfeed then we encourage you to continue.**

“

It is really important for you to know that you can feed your child successfully whether you are breast or bottle feeding. This Milestone is intended to take some of the worry out of feeding your child. Working with a dietitian can also help to provide support and confidence especially when it comes to weaning.

- **Nathalie Newman,**  
Allergy mum and  
advocate

### The Milestones:

- 1 [Managing cow's milk allergy](#)
- 2 **Feeding a child with CMA**
- 3 [Gut health in babies & children](#)
- 4 [The future and allergies](#)
- 5 [Weaning](#)
- 6 [Re-introduction of cow's milk](#)
- 7 [The milk ladder](#)
- 8 [Outgrowing cow's milk allergy](#)

### Allergy UK Helpline

Mon-Fri, 9am-5pm:

Call: 01322 619 898

Email: [info@allergyuk.org](mailto:info@allergyuk.org)

Visit us at:

**Allergyuk.org**

# YOUR BABY'S COW'S MILK ALLERGY JOURNEY

## Milestone 2: Feeding a child with a cow's milk allergy

### What if I'm breast and/or formula feeding?

If you are not breastfeeding or are mixed feeding, your healthcare professional will advise you on the most suitable 'hypoallergenic' formula milk for an infant with a cow's milk allergy.<sup>2,4</sup>

If your baby did not show any allergic symptoms on breast milk alone and the symptoms appeared only when cow's milk-based 'top-up' feeds were given, you should continue breastfeeding and continue to consume cow's milk in your diet. You may wish to return to breastfeeding only. However, if this is not possible, and 'top-up' feeds are needed, your healthcare professional may advise you to replace cow's milk-based formula with hypoallergenic infant formula.<sup>4</sup>

It is worth noting any baby who has less than 500ml formula per day should also be given a vitamin D supplement of 8.5-10mcg per day.

### Your healthcare professional will advise you on the most suitable 'hypoallergenic' formula milk.

### What is a "hypoallergenic formula"?

The word "hypoallergenic" means **low allergy**. The two recommended formulas for babies under six months with cow's milk allergy are:

- Extensively Hydrolysed Formula (eHF)
- Amino Acid Formula (AAF)

Soya is unsuitable under six months of age due to natural phyto oestrogens, but fresh soya milk can be tried in cooking from six months of age (for example, in family meals such as white sauce for lasagne) and as the main drink from the age of one year. Soya infant formula is available to buy from the age of six months old. Some infants may also react to soya, so exclude

if you see symptoms similar to cow's milk allergy returning (this is less likely in the immediate type allergy). Milk alternatives such as almond, oat or coconut milk have poor nutritional value compared with cow's milk and are not suitable for infants. However, they may be used when cooking meals for the family.<sup>4</sup> Rice milk should not be used for children under four and a half years of age.<sup>2</sup>

### What is an extensively hydrolysed formula (eHF)?

eHFs contain proteins that have been broken down into smaller segments so they are less likely to cause an allergic reaction and are therefore suitable for 90% of babies with cow's milk allergy.<sup>6</sup> They are either whey or casein-based, which are different types of milk proteins, and it's important to discuss the best option with your healthcare professional. Some eHF's contain pre- and probiotics that promote the growth of good bacteria in the gut and some eHFs with specific probiotics may also help to speed up the process of returning to cow's milk.<sup>3,7</sup>

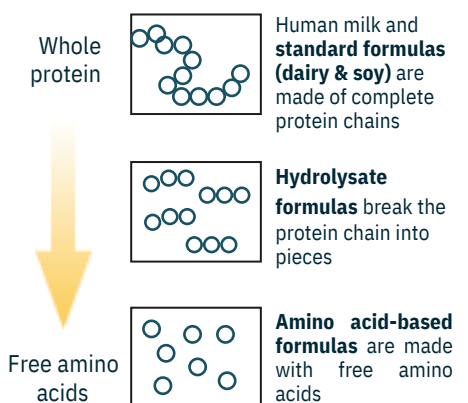
For adults it may seem that eHFs have an unpleasant taste, but remember that babies experience taste differently from an adult and therefore they are more likely to accept an eHF.<sup>8,9,10</sup> There are allergy formulas available that are halal and kosher certified, please ask your healthcare provider.

### What is an amino acid formula (AAF)?

AAFs are based on the individual building blocks (amino acids) that make up a protein. Amino acid formulas are recommended on the rare occasion that a baby continues to have symptoms of cow's milk allergy on an extensively hydrolysed formula (eHF) after two to four weeks, or when it is not an appropriate first choice for a baby with severe allergic reactions.<sup>2,11</sup> It should be noted there are halal and kosher certified allergy formulas available, please speak to your prescriber.

### Hypoallergenic formulas are available for different age groups

#### Protein structure in different milk types:



### What if my baby is older?

Hypoallergenic formulas are available for different age groups of babies with cow's milk allergy, from birth up to young children, it is recommended to be prescribed up to the age of two years old. You can also use alternative milks such as soya, almond, hemp, oat or coconut once your child is two years old, or sooner if advised by your healthcare professional and rice milk once your child is over four-and-a-half years old.<sup>2</sup>

Many alternative milks have adequate calcium as long as you do not buy organic versions, but they are often lower in energy and protein than cow's milk. Make sure you keep track of your child's growth in their red book.

# YOUR BABY'S COW'S MILK ALLERGY JOURNEY

## Milestone 2: Feeding a child with a cow's milk allergy

### Are there special preparation instructions for hypoallergenic formulas?<sup>12,13,14</sup>

- Preparation instructions of some hypoallergenic formulas are different from those of routine formulas. Always follow the preparation instructions provided with the formula or on the packaging.
- All equipment used to feed babies must be sterilised, hands thoroughly washed and surface cleaned before preparing the formula.
- Once prepared, the formula can spoil quickly. Feed immediately after preparation. To reduce the risk of infection, it's best to make up feeds one at a time, as your baby needs them.
- Do not freeze prepared formula and do not use if un-refrigerated for more than two hours.
- Use the formula that has been in contact with the infant's mouth within one hour and do not refrigerate. Throw away prepared formula left in the bottle and clean utensils.
- Do not use a microwave to warm the formula.
- Take care when preparing formula containing probiotics, since heat may deactivate the probiotics. When preparing a formula containing probiotics it is advised that you make individual fresh feeds for immediate use and use boiled water cooled to room temperature.

For further information on how to prepare infant formula, refer to the manufacturer's website, your healthcare professional, dietitian or [NHS Choices](#).



### References:

1. Fox, A., Brown, T., Walsh, J., Venter, C., Meyer, R., Nowak-Węgrzyn, A., Levin, M., Spawls, H., Beatson, J., Lovis, M., Vieira, M. and Fleischer, D., An update to the Milk Allergy in Primary Care guideline. Clin Trans Allergy, 2019;9(1). <https://bit.ly/33gcaLH>
2. BDA Suitable milks for children with cow's milk allergy: Food Fact Sheet - <https://www.bda.uk.com/resource/children-with-cows-milk-allergy.html>
3. Anagnostou, K., Stiefel, G., Brough, H., du Toit, G., Lack, G. and Fox, A., Active management of food allergy: an emerging concept. Arch Dis Childhood. 2015;100(4), pp.386-390.
4. National Institute of Clinical Excellence (NICE) clinical knowledge summaries on Cow's milk Allergy 2019. Available at: <https://www.guidelines.co.uk/paediatrics/nice-cks-cows-milk-allergy-in-children/455249.article>. Accessed: October 2020.
5. Lovis T. Breastfeeding a Baby with CMA. GPIFN: The GP Infant Feeding Network (UK). Available at: <https://gpifn.org.uk/breastfeeding-a-baby-with-cma/>. Accessed: Oct 2020.
6. Vandenplas Y. Prevention and management of cow's milk allergy in non-exclusively breastfed infants. Nutrients 2017;9:731. <http://dx.doi.org/10.3390/nu9070731>
7. Canani B. Formula Selection for Management of Children with Cow's Milk Allergy Influences the Rate of Acquisition of Tolerance: A Prospective Multicenter Study. J Pediatr 2013;163:771-7.
8. Mennella, J et al. Genetic and Environmental Determinants of Bitter Perception and Sweet Preferences. Pediatrics 2005 February;115(2): e216-e222.
9. Rapp et al. Characterization of an extensively hydrolyzed whey infant formula with a low bitterness Clin Trans Allergy 2013;3(3):P132 <http://www.ctajournal.com/content/3/S3/P132>
10. Miraglia Del Giudice et al. Flavor, relative palatability and components of cow's milk hydrolysed formulas and amino acid-based formula. Italian J Pediatrics. 2015;41:42
11. Meyer R, Groetch M, Venter C. When should infants with cow's milk protein allergy use an amino acid formula? A practical guide. The Journal of Allergy and Clinical Immunology: In Practice 2018;6:383-99. <http://dx.doi.org/10.1016/j.jaip.2017.09.003>
12. British Specialist Nutrition Association, Available at: <https://bsna.co.uk/pages/about-specialist-nutrition/infant-nutrition>. Accessed October 2020.
13. British Dietetic Association (2019). Guidelines for the Preparation and Handling of Expressed and Donor Breast Milk and specialist Feeds for Infants and Children in Neonatal and Paediatric Health Care Settings.
14. NHS Health A to Z. Accessed Oct 2020. Available at: <https://www.nhs.uk/conditions/pregnancy-and-baby/making-up-infant-formula/>
15. Vitamins for children - NHS ([www.nhs.uk](http://www.nhs.uk))

### More information for breastfeeding mums:

- National Breastfeeding Helpline – 0300 100 0212
- Association of Breastfeeding Mothers – 0300 330 5453
- National Childbirth Trust (NCT) – 0300 330 0700
- The NHS also has support websites –
  - [www.nhs.uk/conditions/pregnancy-and-baby/benefits-breastfeeding](http://www.nhs.uk/conditions/pregnancy-and-baby/benefits-breastfeeding)
  - [www.nhs.uk/conditions/pregnancy-and-baby/problems-breastfeeding](http://www.nhs.uk/conditions/pregnancy-and-baby/problems-breastfeeding)

### Allergy UK Helpline

Mon-Fri, 9am-5pm:

Call: 01322 619 898

Email: [info@allergyuk.org](mailto:info@allergyuk.org)

Visit us at:

**Allergyuk.org**

# YOUR BABY'S COW'S MILK ALLERGY JOURNEY

## Milestone 3: Gut health in babies and children

### How has my child's poo been affected by a milk allergy?

After your child has been diagnosed with a cow's milk allergy you may be confused about what is 'normal' for their poo. Among the many recognised symptoms of cow's milk allergy are abnormally loose, frequent poos, excessive straining, abdominal discomfort, painful wind and blood +/- mucus in the poo.<sup>6</sup> You may be very worried that these symptoms are not settling when other symptoms have improved, but commonly, symptoms can take time to resolve.

#### What are normal stools for a baby diagnosed with a milk allergy?

Firstly, once your baby has moved to a milk-free diet it may take many weeks for their poo to settle down from the previous irritation from milk protein. Mucus which often looks like a stringy white/clear substance in your baby's nappy may also take many weeks to calm down. Remember that it can be normal for mucus to appear in small amounts at other times, for example when your child has a cold or is teething.

#### The gut may take many weeks to settle down after a diagnosis of milk allergy

If you feel worried that your baby still has more frequent poos than you'd expect, then think about some other factors. Consider whether your baby is gaining weight, as expected for them; are they having at least five wet nappies a day; are they alert and do they appear generally well. If you still feel concerned then you should contact your healthcare provider to discuss your worries.

As your child gets older, there is a broad range of what is 'normal'. We know the frequency of poo reduces over the first

year of life (on average from five to six times per day down to two) in babies who have not had a milk allergy, so you may find your child differs from this. There are times when a baby might strain or cry when passing a poo, which is often normal and settles with time. We also know that breastfed babies may be different from formula-fed babies. A breastfed baby may do a poo after every feed, or not for a few days, and this is in line with what is expected.

#### It is completely safe and normal for your child to have green poo whilst on an allergy formula

#### What about the colour of my baby's poo?

Whilst we are usually looking for mustard or brown coloured poo this may change at times in babies who have a milk allergy. It might come as a surprise that a green poo for babies on an allergy formula is completely normal and not something to worry about. However, if your baby has black/coffee ground coloured poo or poos that look like redcurrant jelly or white poo then this is the time to seek medical advice.

“

I do think that understanding a bit more about the Microbiome really helps as you navigate this journey. Knowing why it is important to have a wide range of foods in your baby's diet is really helpful.

- **Nathalie Newman,**  
Allergy mum and  
advocate

### The Milestones:

- 1 [Managing cow's milk allergy](#)
- 2 [Feeding a child with CMA](#)
- 3 **[Gut health in babies & children](#)**
- 4 [The future and allergies](#)
- 5 [Weaning](#)
- 6 [Re-introduction of cow's milk](#)
- 7 [The milk ladder](#)
- 8 [Outgrowing cow's milk allergy](#)

### Allergy UK Helpline

Mon-Fri, 9am-5pm:

Call: 01322 619 898

Email: [info@allergyuk.org](mailto:info@allergyuk.org)

Visit us at:

**Allergyuk.org**



# YOUR BABY'S COW'S MILK ALLERGY JOURNEY

## Milestone 3: Gut health in babies and children

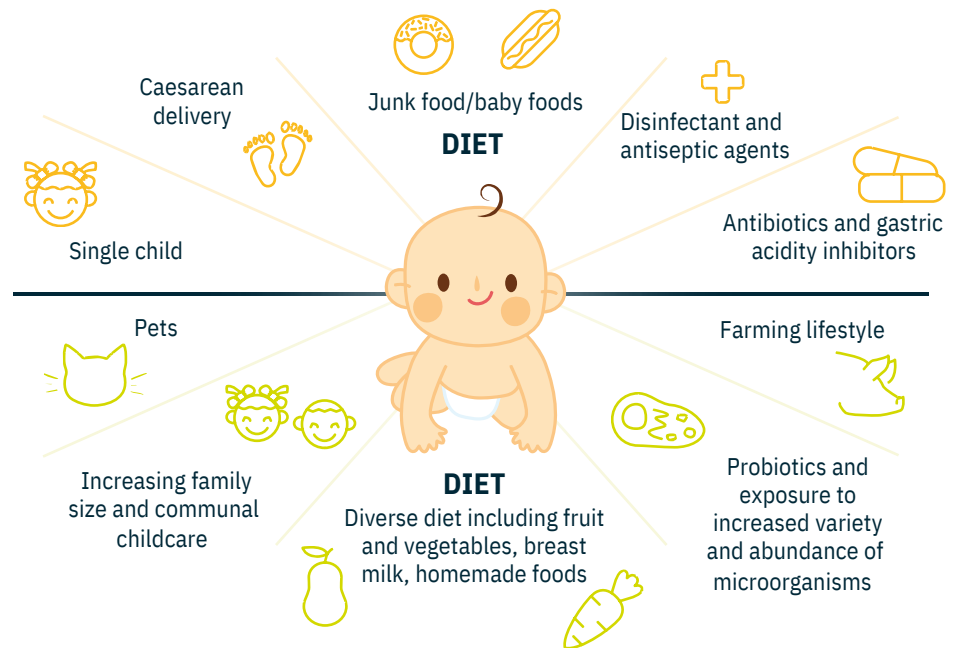
### What about constipation?

Constipation can often occur in combination with other symptoms for babies with a milk allergy. If your child is on medication or thickeners in milk for symptoms of reflux or sickness then these may also cause constipation. At times, a change to a milk-free diet can cause this symptom for the first time and it can take time to develop a regular toilet pattern.

Constipation is considered to be fewer than three poos per week (excluding breastfed babies), hard large poos or 'rabbit droppings', distress, straining or bleeding with hard poo. Try some first-line measures such as gently 'cycling' your baby's legs (lie your baby down and gently move their legs as though they are riding a bicycle), encouraging plenty of fluids (if weaning, encouraging water from a sippy cup) and, if eating food, encouraging plenty of fruit and vegetables. If the constipation is causing real concern then discuss this with a GP/health visitor. Keeping a diary of the types of poo your baby is passing can help work out if there is a concern.

### What factors affect the good and bad bacteria in your baby's gut?

#### Microbial related factors increasing the risk of allergy



#### Microbial related factors reducing the risk of allergy

Adapted from Aitoro, R., et al. 2017. Nutrients, 9(7),672.

**The microbiome refers to trillions of tiny microorganisms or microbes that live inside our bodies**

**Gut microbes play a role in our immune system development**

### Allergy UK Helpline

Mon-Fri, 9am-5pm:

Call: 01322 619 898

Email: [info@allergyuk.org](mailto:info@allergyuk.org)

Visit us at:

**Allergyuk.org**

THE BRISTOL STOOL FORM SCALE (for children)		
choose your <b>Poo!</b>		
type 1		<b>rabbit droppings</b> Separate hard lumps, like nuts (hard to pass)
type 2		<b>bunch of grapes</b> Sausage-shaped but lumpy
type 3		<b>corn on cob</b> Like a sausage but with cracks on its surface
type 4		<b>sausage</b> Like a sausage or snake, smooth and soft
type 5		<b>chicken nuggets</b> Soft blobs with clear-cut edges (passed easily)
type 6		<b>porridge</b> Fluffy pieces with ragged edges, a mushy stool
type 7		<b>gravy</b> Watery, no solid pieces ENTIRELY LIQUID

# YOUR BABY'S COW'S MILK ALLERGY JOURNEY

## Milestone 3: Gut health in babies and children

### What about longer-term gut health?

It is well known that the gut has a complex balance of trillions of tiny microorganisms or microbes (viruses, bacteria and fungi) that live inside our bodies.<sup>1,2</sup> These microbes and how they function in the gut are referred to as the gut microbiome. The microbiome helps to produce vitamins, support our immune system and assist in the development of our gut.<sup>1</sup>

For our long-term health, and possibly to help support outgrowing a milk allergy, research has suggested the microbiome plays a part.<sup>4,5</sup> Not all the mechanisms are understood and this is just one factor in a complex picture.

Our microbiomes need many different types of microbes to function well. There are many reasons for our microbiome to become unbalanced (many reasons that we cannot change) as highlighted in the picture.<sup>2,3</sup> This imbalance of microbes on and in our bodies, can affect our immune system and may trigger responses contributing to diseases or allergies.

Scientists are currently trying to understand more about how our microbes work together in the microbiome during childhood and how its disruption might lead to illness.<sup>4</sup>

It is important to ensure that the balance of our gut microbes is restored early in life, when we're babies, to give us the best chance of avoiding food allergies.<sup>3</sup>



### How does diet affect the microbiome?

In weaning, feeding your baby a wide range of foods helps their gut microbiome develop. The age when a baby starts eating allergenic food also influences whether they may develop food allergies.<sup>2</sup> When they are ready, offering your baby different kinds of fruits, vegetables and a wide variety of foods (See Milestone 5) reduces their chances of developing food allergies.<sup>3</sup>

Some studies have shown that giving babies specific types of probiotics (these are live bacteria that have health benefits) and prebiotics (these are the food that helps the growth or activity of helpful microbes) may make them less likely to develop allergies.<sup>1</sup> Not all types of probiotics have the same effect, for example, probiotics can be beneficial in different ways and the way one strain works is not the same as another. Some studies have shown that some types of probiotics may help children with cow's milk allergy outgrow their allergy sooner. This benefit may not be the same for all probiotics.<sup>5</sup>

### Why is earlier exposure to allergens helpful?

Diet also has an impact on our gut microbes and allergy tolerance. Ensuring that children eat a variety of fruits, vegetables and a wide range of foods from an early age, will help in reducing food allergies.<sup>3</sup> Read more about healthy diet and weaning, in Milestone 5.

### References:

1. Mueller, N., Bakacs, E., Combellick, J., Grigoryan, Z. and Dominguez-Bello, M., 2015. The infant microbiome development: mom matters. Trends in Molecular Medicine, 21(2), pp.109-117. <https://bit.ly/3hh7GcT>
2. Marrs, T., Bruce, K., Logan, K., Rivett, D., Perkin, M., Lack, G. and Flohr, C., 2013. Is there an association between microbial exposure and food allergy? A systematic review. Pediatric Allergy and Immunology, 24(4), pp.311-320.e8.
3. Aitoro, R., Paparo, L., Amoroso, A., Di Costanzo, M., Cosenza, L., Granata, V., Di Scala, C., Nocerino, R., Trinchese, G., Montella, M., Ercolini, D. and Berni Canani, R., 2017. Gut Microbiota as a Target for Preventive and Therapeutic Intervention against Food Allergy. Nutrients, 9(7), p.672.
4. Tamburini, S., Shen, N., Wu, H. and Clemente, J., 2016. The microbiome in early life: implications for health outcomes. Nature Medicine, 22(7), pp.713-722.
5. Canani, B., et al. Extensively hydrolyzed casein formula containing Lactobacillus rhamnosus GG reduces the occurrence of other allergic manifestations in children with cow's milk allergy: 3-year randomized controlled trial. J Allergy Clin Immunol. 2017;139(6):1906-1913.

### Where can I get more information?

You will find information about weaning on the Allergy UK website [www.allergyuk.org](http://www.allergyuk.org):

- [Allergy UK weaning your allergic baby digital pack](#)
- [Allergy UK Factsheet: Introducing your baby to solids](#)

### Allergy UK Helpline

Mon-Fri, 9am-5pm:

Call: 01322 619 898

Email: [info@allergyuk.org](mailto:info@allergyuk.org)

Visit us at:

**Allergyuk.org**

# YOUR BABY'S COW'S MILK ALLERGY JOURNEY

## Milestone 4: The future and allergies

### When will my child outgrow their cow's milk allergy?

It can be difficult to give a definite answer to this question when your child has been diagnosed with a cow's milk allergy. But we do know from research that this is one of the allergens that are most likely to be outgrown. Most children will become tolerant of cow's milk anywhere from one to five years of age<sup>1</sup> whilst for other children tolerance might develop in their early teenage years.<sup>2,3</sup> Babies who develop delayed symptoms are more likely to become tolerant sooner, compared with children who have experienced immediate reactions.<sup>1</sup>

#### Will my child have other allergies in the future?

Research tells us that babies with cow's milk allergy are two to four times more likely to experience other conditions such as eczema (over two times), gut symptoms, wheezing (four times), respiratory allergies (over three times) and other food allergies than those without food allergies. Whilst older children may suffer from asthma and nasal allergies like hayfever.<sup>3,4</sup>

Food allergies are not the only predictors of whether a child may suffer from allergies in the future. The development of future allergies may depend on whether the baby's parents have also suffered from allergies in their lives (hereditary) and the environment around the baby, such as exposure to pets, dust, pollen and other environmental allergens. The gut microbiome may also play its part.

**Most children will become tolerant of cow's milk anywhere from one to five years of age<sup>1</sup>**

#### How should I prepare and plan for my baby or child?

The more immediate future and how to plan for every day to make life as normal as possible may be a worry for you and your family. The good news is that this is achievable, with forward planning and educating and informing others who have responsibility for caring for your child.

If your child goes to nursery or school, or you have other childcare provision, then those caring for them in these environments need a good understanding of your child's allergies through adequate training. An appropriate management plan for your child is important because this will give you some reassurance when your child is not in your care. A common example of a management plan for immediate food allergy would be from BSACI: Paediatric Allergy Action Plans.

There may be other events that need more planning like children's parties, family gatherings, eating out and travelling abroad. Try taking foods with you, always ask about allergies and don't be afraid to speak up. Take with you any allergy relief medication that your baby has been prescribed if they have an immediate

“

Wondering whether your child will have allergies in the future is a natural concern for us parents and you will want to know how likely this is. While there are a number of factors in this, knowing what to look out for is probably the most important.

- **Nathalie Newman,**  
Allergy mum and  
advocate

### The Milestones:

- 1 [Managing cow's milk allergy](#)
- 2 [Feeding a child with CMA](#)
- 3 [Gut health in babies & children](#)
- 4 **[The future and allergies](#)**
- 5 [Weaning](#)
- 6 [Re-introduction of cow's milk](#)
- 7 [The milk ladder](#)
- 8 [Outgrowing cow's milk allergy](#)

### Allergy UK Helpline

Mon-Fri, 9am-5pm:

Call: 01322 619 898

Email: [info@allergyuk.org](mailto:info@allergyuk.org)

Visit us at:

**Allergyuk.org**



#ItsTimeToTakeAllergySeriously  
[www.allergyuk.org](http://www.allergyuk.org)

Published 2021. The information in this toolkit has been prepared by Allergy UK and peer reviewed by leading experts in cow's milk allergy. It is designed to be a helpful resource to explain further the types of milestones your child may reach after a diagnosis of cow's milk allergy. The guidance provided is based on current best practice, but please note that it is subject to change in the light of new relevant information and it does not replace medical/clinical advice. Always speak to your healthcare professional about any concerns you may have about managing the needs of a child with cow's milk allergy.

## YOUR BABY'S COW'S MILK ALLERGY JOURNEY

### Milestone 4: The future and allergies

allergy. For more information about managing, shopping, travelling, and starting in childcare settings please see Allergy UK's Factsheets below.

As a parent with a child with food allergies we recognise it is not easy in these situations and you require support, as well as your child.

**It's important to get individual advice from a qualified healthcare professional to give your child the best possible start**

## How can I help my child outgrow their milk allergy quicker?

Proactive management with support from a healthcare professional means slowly reintroducing small amounts of cow's milk protein in the baked form e.g. a biscuit to help your child get back to cow's milk.<sup>6</sup> The age of your child, location and how this is done is unique to each child but is often around the one year of age mark.

Healthcare providers have shifted their focus to not keeping children on overly restricted diets for long periods as this does not help tolerance in infants. Read more about this in Milestones 6 and 7.

If your child is well but continues to have allergy symptoms, consider keeping a food and symptoms diary. In [Milestone 1](#) of this roadmap, we mentioned this helpful document to record symptoms and food eaten. However, you can also add things like seasons, contact with animals, bowel habit, any skin flare-ups or other information about things around your baby or child that may also be causing allergy symptoms.



### References:

1. Schoemaker et al. Incidence and natural history of challenge-proven cow's milk allergy in European children – EuroPrevall birth cohort. *Allergy* 2015;70:963–972. DOI:10.1111/all.12630
2. Spergel J. Natural history of cow's milk allergy. *J Allergy Clin Immunol* 2013;131:813–4.
3. Canani, B., et al. Extensively hydrolyzed casein formula containing *Lactobacillus rhamnosus* GG reduces the occurrence of other allergic manifestations in children with cow's milk allergy: 3-year randomized controlled trial. *J Allergy Clin Immunol*. 2017;139(6):1906–1913.
4. BSACI Accessed Oct 2020. Patient Information pages. Available at: <https://www.bsaci.org/patients/most-common-allergies/allergy-in-children/>
5. Bergmann RL, Wahn U, Bergmann KE. The allergy march: from food to pollen. *Environ Toxicol Pharmacol*. 1997;4:79–83.
6. Luyt D, et al. BSACI guideline for the diagnosis and management of cow's milk allergy. *Clinical & Experimental Allergy*. 44, 642–672.

## Where can I get more information?

There are many resources where you can find more information about managing your child's allergies. Here are some links to useful resources:

- [Allergy UK Factsheet: Travelling with the allergic infant](#)
- [Allergy UK Factsheet: Shopping and cooking for a restricted diet](#)
- [Allergy UK Factsheet: Starting a new school](#)
- [Allergy UK Factsheet: Guidance for Early Years settings](#)
- [Patient Resources: British Society for Allergy and Clinical Immunology \(bsaci.org\)](#)
- [Find an allergy Clinic \(bsaci.org\)](#)
- [British Dietetic Association \(bda.uk.com\)](#)
- [Support for people at risk of severe allergies \(anaphylaxis.org.uk\)](#)
- [NHS Health A to Z: Allergies \(nhs.uk\)](#)
- [Food Standards Agency: Food allergy and intolerance \(food.gov.uk\)](#)



## Allergy UK Helpline

Mon-Fri, 9am-5pm:

Call: 01322 619 898

Email: [info@allergyuk.org](mailto:info@allergyuk.org)

Visit us at:

Allergyuk.org

Published 2021. The information in this toolkit has been prepared by Allergy UK and peer reviewed by leading experts in cow's milk allergy. It is designed to be a helpful resource to explain further the types of milestones your child may reach after a diagnosis of cow's milk allergy. The guidance provided is based on current best practice, but please note that it is subject to change in the light of new relevant information and it does not replace medical/clinical advice. Always speak to your healthcare professional about any concerns you may have about managing the needs of a child with cow's milk allergy.

Allergy UK is the operational name of The British Allergy Foundation, a charitable company limited by guarantee and registered in England and Wales. Company no: 4509293. Charity no: 1094231. Registered in Scotland. Charity no: S



#ItsTimeToTakeAllergySeriously  
www.allergyuk.org



# YOUR BABY'S COW'S MILK ALLERGY JOURNEY

## Milestone 5: Weaning

### When should I start weaning my baby who has a cow's milk allergy?

For many years in the UK the recommended time to start weaning or introducing foods has been from around six months old when your baby is developmentally ready.<sup>1</sup> While this remains the UK recommendation for all babies, research has suggested that starting earlier than this may be of benefit for some babies at risk of allergy.

If your baby is considered at high risk of allergies (babies with eczema or who already have a food allergy), earlier weaning may be considered, but not before 17 weeks. You will need to consider if your baby is developmentally ready (if your baby was born prematurely then seek advice about when the time is right for your baby).<sup>1,2</sup>

Signs of readiness include being able to sit with support in a high chair with their head steady, trying to reach out to grab food and put it in their mouth, loss of the "tongue thrust reflex" (babies who aren't ready, push the food back out with their tongue, so they get more round their face than they do in their mouths).<sup>4</sup>

If you do wean your baby earlier than at six months, it is advised that you start with puréed foods.<sup>2</sup> The baby-led weaning approach is safe for babies aged six months or older. Read more about this later in this Milestone.

**Babies at risk of allergy may benefit from earlier introduction of weaning foods but not before 17 weeks**



### What should I know about weaning my baby who has CMA?

Start by offering your baby small amounts of food, such as soft vegetables, fruit, starchy foods (like potato, sweet potato, milk free baby rice), protein foods (like chicken, meat, fish) or vegetable protein (like lentils or chickpeas), in textures appropriate for your baby's age. Adding salt and sugar is not needed.<sup>2</sup>

Some parents may prefer baby-led weaning, which means offering your baby only finger foods and letting them feed themselves from the start, rather than spoon-feeding them puréed or mashed foods. Of course, you can also choose to try a combination of both approaches. Baby-led weaning should only be done from six months when it's safer for babies.<sup>7</sup>

“

I remember that weaning was a particularly worrying time. Keeping a food diary was so helpful because it meant that I could keep track of the food offered and, importantly, keep a note of any reactions.

- **Nathalie Newman,**  
Allergy mum and advocate

### The Milestones:

- 1 [Managing cow's milk allergy](#)
- 2 [Feeding a child with CMA](#)
- 3 [Gut health in babies & children](#)
- 4 [The future and allergies](#)
- 5 **Weaning**
- 6 [Re-introduction of cow's milk](#)
- 7 [The milk ladder](#)
- 8 [Outgrowing cow's milk allergy](#)

### Allergy UK Helpline

Mon-Fri, 9am-5pm:

Call: 01322 619 898

Email: [info@allergyuk.org](mailto:info@allergyuk.org)

Visit us at:

**Allergyuk.org**

# YOUR BABY'S COW'S MILK ALLERGY JOURNEY

## Milestone 5: Weaning

A wide range of tastes and textures from all the food groups (this may include home-cooked or commercial products) should be given, but not those that contain cow's milk as an ingredient. You need to carefully check the ingredients list on food items for milk protein and avoid foods that contain any of the following:

- Cow's milk (fresh, UHT)
- Casein (curds), caseinates
- Evaporated milk
- Calcium or sodium caseinate
- Condensed milk
- Hydrolysed casein
- Buttermilk
- Whey, whey solids, whey powder, whey protein, whey syrup sweetener, hydrolysed whey protein
- Butter, butter oil
- Ghee
- Cheese
- Milk powder, skimmed milk powder, milk sugar, milk protein, non-fat milk solids, modified milk
- Yogurt
- Fromage Frais
- Margarine
- Ice cream
- Cream/ artificial cream
- Lactoglobulin
- Lactalbumin

Make sure you read food labels carefully.<sup>3</sup> Foods packaged within the European Union are required by law to include allergen information. Ingredient lists on food labels have to clearly highlight that they contain specific allergens. Read more about food labelling here.

Here's an example of a label showing a milk allergen in bold:

#### INGREDIENTS:

Water, Vegetable Oils (37%) (Rapeseed Oil, Palm Oil), Olive Oil (22%), **Whey Powder (from Milk)**, Salt (1.1%), Emulsifier (Mono- and Diglycerides of Fatty Acids), Stabiliser (Sodium Alginate), Preservative (Potassium Sorbate), Colour (Carotenes), Flavouring, Vitamin A, Vitamin D.

For more information about a milk-free diet and how to ensure you are meeting nutritional goals for your child with a cow's milk allergy, please read our leaflet: [Cow's Milk-Free Diet information for Babies and Children](#).

### Will diet help with managing my baby's CMA?

Giving your baby a variety of foods, alongside breast or formula milk, will help set your child up for a lifetime of healthier eating.<sup>4</sup> If your baby's diet has an abundance of fruits, vegetables and a wide range of foods, this may lower the likelihood of food allergy by the time your baby is two years of age.<sup>5</sup> Gradually, you'll be able to increase the amount and variety of food your baby eats until they can eat the same foods as the rest of the family, in smaller portions. In the beginning, how much your baby eats is less important than getting them used to the idea of eating, as they'll still be getting most of their energy and nutrients from breast milk or infant formula.<sup>4</sup>

### Feeding a wide range of foods may lower the likelihood of food allergy

### Can I feed my baby foods that are known to cause allergies?

Feeding your baby other well-known allergens like egg and peanut has been shown to help lower the chances that your baby will be allergic to these foods.<sup>2</sup> For this reason it is encouraged to introduce foods like cooked egg, and then smooth peanut butter early in the weaning process, followed by other foods known to cause food allergies.<sup>6</sup>

It is encouraged when weaning to have a diverse diet from an early age. Try any new higher allergen food from the following list individually, when your baby is well, early in the day and ensure you

start with small amounts of each food and gradually build up.

It is recommended that foods that are known to cause allergies are also introduced as part of a varied diet from weaning.<sup>3</sup>

- Well cooked egg (eggs without a red lion stamp should not be eaten raw or lightly cooked)
- Foods that contain gluten, including wheat, barley and rye
- Nuts and peanuts (serve as nut spreads or finely ground)
- Seeds (For sesame, tahini is a good example or hummous has sesame, but try chickpeas as a separate food first)
- Soya (some babies with a delayed reaction to milk can react to soya but try to introduce cautiously and assess)
- Shellfish (don't serve raw or lightly cooked)
- Fish

Only give your baby foods in a form that is age-appropriate, to avoid the risk of choking.<sup>2</sup>

It is very important that once introduced, and there is no reaction, you should keep offering those foods as part of your baby's usual diet, to minimise the risk of allergy. By frequently giving these foods it helps continue to reduce the risk of your child becoming allergic to them.<sup>3</sup>

For more support with introducing these foods please see the [BSACI Infant feeding and allergy guidance](#) or [Allergy UK Weaning Support Pack](#).

### Foods that are known to cause allergies, can be introduced as part of a varied diet from the start of weaning, one at a time

# YOUR BABY'S COW'S MILK ALLERGY JOURNEY

## Milestone 5: Weaning

### How do I monitor if my baby is reacting?

Pay attention to any reactions your baby may experience when feeding. Immediate-type allergic reactions (which are rare) usually happen within a minute or two or up to two hours after eating the food.<sup>2,8</sup> Reactions may vary in their severity.<sup>2</sup> Keep note of any foods you are concerned about, including any possible reactions.

If your baby shows no reaction immediately after feeding, remember to also keep an eye out for any delayed reactions that your baby may show hours after eating. If you are concerned about a potential reaction, make sure you consult a healthcare professional. You should seek attention as soon as possible if an immediate reaction has occurred. For more information on symptoms can be found within our Cow's Milk Allergy Factsheet.

Don't continue to feed your baby something they are reacting to.<sup>1</sup> If you think your baby may be having an allergic reaction, seek medical advice.<sup>2</sup> If you are worried about introducing

new foods or foods that have previously caused an immediate reaction in your baby, then consider discussing a prescription for antihistamines with your healthcare professional.

### Pay attention to any reactions your baby may experience when feeding



### References:

1. British Association of UK Dietitians (BDA) and BSACI. Food Allergy Prevention Guidance: Early Feeding Guidance for Healthcare Professionals. May 2018. Available at: <https://www.bda.uk.com/uploads/assets/de7160c4-2d3b-434b-9f9beda963a27469/dingguidanceforhealthcareprofessionals.pdf>
2. British Association of UK Dietitians (BDA) and BSACI. Food Allergy Prevention Guidance: Infant Feeding and Allergy Prevention Guidance for Parents. May 2018. Available at: <https://www.bda.uk.com/uploads/assets/83f06cda-f25d-49c5-96ee95f41a1f65c7/ndallergypreventionguidanceforparents.pdf>
3. NHS Start4Life. Weaning: Safe Weaning. Available at: <https://www.nhs.uk/start4life/weaning/safe-weaning/>. Accessed: Oct 2020
4. NHS Health A to Z, Your pregnancy and baby guide. March 2019. Available at: <https://www.nhs.uk/conditions/pregnancy-and-baby/solid-foods-weaning/>
5. Grimshaw K. et al. Diet and food allergy development during infancy: Birth cohort study findings using prospective food diary data. J Allergy Clin Immunol 2014;133:511-9.
6. Perkin M. et al. Enquiring About Tolerance (EAT) study: Feasibility of an early allergenic food introduction regimen. J Allergy Clin Immunol 2016;137:1477-86.
7. NHS Start4Life. Weaning: What to feed your baby: Around 6 months. Available at: <https://www.nhs.uk/start4life/weaning/what-to-feed-your-baby/around-6-months/> Accessed: Dec 2020
8. Fox, A., Brown, T., Walsh, J., Venter, C., Meyer, R., Nowak-Węgrzyn, A., Levin, M., Spawls, H., Beatson, J., Lovis, M., Vieira, M. and Fleischer, D., An update to the Milk Allergy in Primary Care guideline. Clin Trans Allergy, 2019;9(1). <https://bit.ly/33gcaLH>

### Where can I get more information?

More information, ideas and recipes can be found at:

- [Allergy UK Factsheet: Weaning - Introducing your baby to solids](#)
- [Allergy UK Factsheet: Cow's Milk Free Diet Information for Babies and Children](#)
- [Allergy UK FREE Weaning your allergic baby digital pack](#)
- [Allergy UK weaning recipes](#)
- [Preventing food allergy in your baby: A summary for parents \(bsaci.org\)](#)
- [Iodine: Food Fact Sheet \(bda.uk.com\)](#)
- [Calcium: Food Fact Sheet \(bda.uk.com\)](#)
- [NHS Start4Life: weaning \(www.nhs.uk\)](#)
- [Complementary feeding \(weaning\): Food Fact Sheet \(bda.uk.com\)](#)
- [NHS Start4Life: Safe Weaning \(www.nhs.uk\)](#)

### Allergy UK Helpline

Mon-Fri, 9am-5pm:

Call: 01322 619 898

Email: [info@allergyuk.org](mailto:info@allergyuk.org)

Visit us at:

**Allergyuk.org**

# YOUR BABY'S COW'S MILK ALLERGY JOURNEY

## Milestone 6: Re-introduction of cow's milk protein

### What are the benefits of re-introducing cow's milk protein?

Finding ways to provide your child with cow's milk in their diet is not only important for their diet but it will also reduce the anxiety and inconvenience of having to maintain a milk free diet. Cow's milk provides us with energy, protein, calcium, vitamins and other minerals. Although we get some of these nutrients from other foods, milk products provide us with much of the calcium we need.<sup>1</sup> Cow's milk is found in many of the everyday foods we have available, which is why it's probably the most difficult allergen to avoid.<sup>1</sup> It's used in the manufacture of many nutritionally important foods, such as yogurt and cheese.<sup>1</sup>

The aim is to re-introduce cow's milk gradually, step by step, back into your baby's diet. The process of building up to having fresh cow's milk is followed according to the milk ladder ideally with the support of a healthcare professional,<sup>2</sup> which you can read more about in [Milestone 7](#).

If you would like more information, support or help about re-introduction, refer to our resources at the end of this document.

### Cow's milk provides us with energy, protein, calcium, vitamins and other minerals

### When will my child be ready for milk introduction?

The time it takes for a baby to be ready to have cow's milk in their diet again, is different for each baby. Many children outgrow their allergy during childhood<sup>1</sup> and can have milk in baked form before dairy products or fresh milk.<sup>1,4</sup>

Most children will grow out of their cow's milk allergy by five years of age or before with, persistent milk allergy less common.<sup>1</sup>

The process of milk reintroduction will differ depending on whether your baby has had an immediate or delayed reaction to milk for safety reasons.

### Each baby is different when it comes to re-introducing cow's milk

### How is milk reintroduced in delayed (non IgE) milk allergy?

If your baby has delayed onset allergy and been on a milk free diet for around six months they may be able to have baked milk introduced between the age of nine to twelve months to see if they have outgrown their allergy.<sup>1,2</sup> Your healthcare professional will assess whether your child has started to outgrow their milk allergy. Based on their judgement, they may then advise you to introduce cow's milk back into their diet, as milk is an important part of their diet for the long-term. Tolerance is often achieved more quickly with delayed reactions to milk, but support is needed to ensure an adequate diet and growth and to fully understand how to progress.

“

This can be a bit daunting and the guidance of your consultant or dietitian is vital. If your child is ready they will provide you with a milk ladder to follow, along with the advice you will need on how to slowly introduce foods containing cow's milk and what to

watch out for.

- **Nathalie Newman,**  
Allergy mum and  
advocate

### The Milestones:

- 1 [Managing cow's milk allergy](#)
- 2 [Feeding a child with CMA](#)
- 3 [Gut health in babies & children](#)
- 4 [The future and allergies](#)
- 5 [Weaning](#)
- 6 **Re-introduction of cow's milk**
- 7 [The milk ladder](#)
- 8 [Outgrowing cow's milk allergy](#)

### Allergy UK Helpline

Mon-Fri, 9am-5pm:

Call: 01322 619 898

Email: [info@allergyuk.org](mailto:info@allergyuk.org)

Visit us at:

**Allergyuk.org**



# YOUR BABY'S COW'S MILK ALLERGY JOURNEY

## Milestone 6: Re-introduction of cow's milk protein

### How is milk introduced for an immediate (IgE mediated) milk allergy?

If your baby has immediate onset IgE milk allergy you may be advised to reintroduce baked milk into the diet from the age of twelve months if your baby is ready. This must only be started on the advice of your healthcare professional after they have carried out an assessment, most likely including either skin prick tests or blood tests. In the past, doctors would advise parents not to feed their child any dairy.<sup>1</sup> However, more recent studies have shown that slowly re-introducing milk in a baked form, for example, a small amount of biscuit, may help to achieve tolerance quicker. But each child needs to be assessed individually due to safety. Whilst it is important to help your child gain tolerance remember that not all children will start at the same time.

A slower milk reintroduction might be recommended.<sup>1,7</sup> For some children this may take place when you are with a healthcare professional at an allergy centre or hospital so that your baby is in safe hands in case of a severe allergic reaction. Other children may be able to have baked milk introduced at home, but they will be assessed on an individual basis. It is important to remember that tolerance

to baked milk does not mean a child has outgrown their milk allergy yet, but it is the first step in working towards this.

It is then important your child is assessed regularly on how to progress, alongside monitoring growth and nutritional adequacy of the diet.

### Your healthcare professional will advise the reintroduction of cow's milk for your child when they are ready

### Where can I get support and what if my baby has an allergic reaction?

Always listen to the advice of your healthcare professional or dietitian. Reintroduction of cow's milk at home should only be done if you have been advised to do so and received clear guidance on how to start.<sup>1</sup>

If the symptoms return, stop the re-introduction and inform your healthcare professional or dietitian.<sup>6</sup> If your baby is unwell with an immediate reaction or significant delayed reaction then please seek medical help straight away.

A [food and symptoms diary](#) may be helpful when reintroducing foods back into the diet.

### Resources:

1. Luyt D, et al. BSACI guideline for the diagnosis and management of cow's milk allergy. Clinical & Experimental Allergy, 44, 642–672.
2. Fox, A., Brown, T., Walsh, J., Venter, C., Meyer, R., Nowak-Węgrzyn, A., Levin, M., Spawls, H., Beatson, J., Lovis, M., Vieira, M. and Fleischer, D., An update to the Milk Allergy in Primary Care guideline. Clin Trans Allergy, 2019;9(1). <https://bit.ly/33gcaLH>
3. The iMAP Milk Allergy Guideline – Initial Fact Sheet for Parents. October 2016. Available at: [https://gpifn.files.wordpress.com/2019/10/imap\\_patient\\_factsheet\\_original.pdf](https://gpifn.files.wordpress.com/2019/10/imap_patient_factsheet_original.pdf). Accessed on: Oct 2020
4. NHS Health A to Z, Your pregnancy and baby guide. March 2019. Available at: <https://www.nhs.uk/conditions/pregnancy-and-baby/solid-foods-weaning/>
5. The iMAP Milk Allergy Guideline – initial fact sheet for infants with symptoms of a possible mild to moderate non-IgE mediated allergy whilst being exclusively or partly breastfed. April 2019. Available at: <https://gpifn.files.wordpress.com/2019/10/imap-supporting-breastfeeding-factsheet.pdf>. Accessed on: Oct 2020.
6. The iMAP Milk Allergy Guideline - The Early Home Reintroduction to Confirm the Diagnosis of Cow's Milk Allergy. Accessed on: October 2016. [https://gpifn.files.wordpress.com/2019/10/home\\_reintroduction\\_protocol\\_to\\_confirm\\_or\\_exclude\\_diagnosis\\_original.pdf](https://gpifn.files.wordpress.com/2019/10/home_reintroduction_protocol_to_confirm_or_exclude_diagnosis_original.pdf). Accessed: Oct 2020.
7. Ball H, Luyt D Homebased cow's milk reintroduction using a milk ladder in children less than 3 years old in IgE mediated cow's milk allergy. Clinical Exp Allergy 2019

There are many helpful resources that you can access online or you can call the following helplines for non-urgent queries:

- Allergy UK Helpline [info@allergyuk.org](mailto:info@allergyuk.org) / 01322 619898

Here are some useful online resource links:

- [British Dietetics Association: Milk Allergy guidance on a dairy free diet and advice on food labels and on the best dairy free substitutes. Milk allergy \(bda.uk.com\)](#)
- [Allergy UK Factsheet: Cow's Milk Free Diet Information For Babies and Children](#)

### Allergy UK Helpline

Mon-Fri, 9am-5pm:

Call: 01322 619 898

Email: [info@allergyuk.org](mailto:info@allergyuk.org)

Visit us at:

**Allergyuk.org**

# YOUR BABY'S COW'S MILK ALLERGY JOURNEY

## Milestone 7: The milk ladder

### What is the milk ladder and why am I being asked to follow it?

**Milestone 6** of this roadmap, explains the importance of reintroducing cow's milk back into your baby's diet if appropriate to do so.<sup>1</sup> If your baby has delayed onset cow's milk allergy, without any signs of eczema, and has not had any immediate allergic reactions, then your healthcare professional may advise you to reintroduce cow's milk protein in small amounts, once you have followed several months of exclusion.<sup>1</sup> Generally, babies with delayed (Non-IgE) cow's milk allergy are advised to follow a cow's milk free diet until nine to twelve months of age, or for around four- six months. It is recommended that this should be done with the support of a healthcare professional or dietitian.

For the milk ladder in immediate cow's milk allergy (IgE mediated) please see Milestone 6. If your child has had an immediate reaction to milk, reintroduction of tiny amounts of baked milk is also important to gain early tolerance but should be guided by a healthcare professional, especially if symptoms have been more severe or in older children. If your child has been diagnosed with a condition called **FPIES**, milk ladders should not be used and reintroduction in hospital (around age two) is normally recommended.

#### What is the milk ladder?

Reintroduction of cow's milk is done gradually, according to something called the 'milk ladder'. To begin with, milk in a form that is least likely to cause an allergic reaction is given. Then, as the baby shows minimal delayed symptoms or no reaction, less broken-down forms of milk are given until they can have fresh milk without a reaction.<sup>2</sup> The milk ladder starts with well-cooked (baked) milk products because this is the form of milk least likely to cause an allergic reaction. The presence of flour is also important in binding with the baked milk and making it less allergenic. When milk is heated or 'baked', the protein is changed into a less allergenic form and so your baby/infant can tolerate this form first. If your baby shows no allergic reaction, then lightly cooked milk products (less

baked) or heated milk products without flour are given until finally uncooked fresh milk can be tried when recommended.<sup>2</sup>

#### Will following the milk ladder help my baby and me?

Following the milk ladder, starting with baked milk, will help your baby get back to milk faster than avoiding cow's milk completely. As they become tolerant and have very mild or no reactions, you can then give more forms of cow's milk according to the milk ladder. <sup>2</sup> Don't be disappointed if this takes time. All children are different and some may become tolerant after their first year, some by age two to three, school age or sometimes a bit longer.<sup>2</sup> Some children continue to have poor tolerance to fresh milk, but this is not a big problem as alternatives are readily available.

“

Understanding the milk ladder and why you have been asked to follow is a good start for this Milestone. From my experience I would say take it slowly and try not to be deterred if you notice possible mild reactions. Go back down a stage and get some support from a dietitian.

- **Nathalie Newman,**  
Allergy mum and advocate

### The Milestones:

- 1 [Managing cow's milk allergy](#)
- 2 [Feeding a child with CMA](#)
- 3 [Gut health in babies & children](#)
- 4 [The future and allergies](#)
- 5 [Weaning](#)
- 6 [Re-introduction of cow's milk](#)
- 7 **[The milk ladder](#)**
- 8 [Outgrowing cow's milk allergy](#)

### Allergy UK Helpline

Mon-Fri, 9am-5pm:

Call: 01322 619 898

Email: [info@allergyuk.org](mailto:info@allergyuk.org)

Visit us at:

**Allergyuk.org**

# YOUR BABY'S COW'S MILK ALLERGY JOURNEY

## Milestone 7: The milk ladder

### Milk ladder: Understanding the theory in immediate milk allergy<sup>2</sup>

This is for information only and not guidance of how to start the milk ladder. Understanding how the milk ladder works may be helpful for you and your child. How to introduce this to your child in a practical way, with more detail of how to start, will be guided by your healthcare professional and they will assess when they are ready for each stage. It should not be attempted without assessment and support first with an appropriate management plan in place. Each stage needs agreement with your healthcare professional to progress cautiously and may take many months, or longer, to achieve. This is completely normal for immediate milk allergy and should not be rushed, but over time may lead to tolerance.

#### Stage 1:

- Least allergenic
- Less milk protein
- Baked in a complex structure

#### Stage 4:

- Most allergenic
- High milk protein
- Not cooked

Stage 1 Starting point	Stage 2	Stage 3	Stage 4 End point
<b>'Baked biscuits'</b> <p>Baked milk is small amounts of whole milk protein in a complex. For example flour in a biscuit, baked at a high temperature so the milk proteins are changed in structure and can be tolerated by some milk allergic children. This will be built up slowly, for example, starting with a crumb and increased over many weeks. You may be asked to stay on this stage for many months. For some children this stage may be offered as a supervised challenge in hospital.</p>	<b>'Baked other products'</b> <p>Once biscuits have been tolerated regularly and for a period of time, if your child is ready, you may be advised to try other baked products. For example cakes, breads and mini Yorkshire puddings or less cooked products with minimal milk, for example butter.</p>	<b>'Cooked milk products'</b> <p>Cooked milk refers to increasing amounts of milk protein as a heated ingredient, for example, cheese on a pizza or white sauce in a lasagne.</p> <p>This is a significant increase in milk protein and would be advised if your healthcare professional feels your child is outgrowing their milk allergy. You are likely to be advised to progress very slowly to ensure safety.</p> <p>Following this, products that have been processed but less well cooked, for example yoghurt or chocolate, may be advised to be introduced very slowly.</p>	<b>'Fresh or raw milk'</b> <p>Fresh milk products are not cooked and much more allergenic. For this reason, this step would not be considered for your child by their clinical team until the previous three steps are included in the diet, with no tolerance issues and on a daily basis.</p> <p>Over time we hope your child can enjoy these freely, but how quickly they can be increased is unique to your child and needs to be assessed individually.</p>

# YOUR BABY'S COW'S MILK ALLERGY JOURNEY

## Milestone 7: The milk ladder

### How does the milk ladder work day to day?

There are many versions of the milk ladder available. There are different ones for immediate (IgE) and delayed (non-IgE) milk allergy so the day to day may depend on your child's allergic history. The table shows how you may be asked to introduce milk protein back into the diet if your child has an immediate milk allergy.

Delayed (non-IgE) cow's milk allergy has other milk ladders available<sup>4</sup>. Introductions may move faster than the guidance for immediate (IgE) milk allergy but this depends on your child's symptoms. A slow cautious approach is advised for all types of milk allergy.

The aim for both milk ladders is for foods containing milk that can be tolerated should be part of your child's diet on a regular basis and not only given occasionally.

### 'Baked' cow's milk is less allergenic than fresh cow's milk

The milk ladder is based on the fact that 'baked' cow's milk protein is usually less allergenic than fresh cow's milk. The more 'baked' the protein, the less allergenic it is. Therefore, the food on the ladder starts with a very well baked milk protein, then the further steps give examples of gradually less baked milk protein products until finally fresh milk is given.

### Where can I get more information?

- [Milk ladder recipe sheet](#)



Before starting the ladder, your child must be well with no tummy or skin symptoms and with healthy bowels (their normal poos). Start early in the day and not before bedtime so that you can keep an eye on your child.

Step one is often with a malted milk biscuit (do not use a biscuit with any type of undercooked cow's milk, for example a cream filling or chocolate). You could also try a savoury option such as those found in the provided iMAP recipes. When starting, your healthcare professional will advise how much of the biscuit to try, as this will depend on your child. It may range from a small crumb to a slightly larger amount. If there have been no symptoms, you'll be advised to continue to give small amounts of biscuit, gradually increasing the amount. This may take several weeks. After this first step, you'll then be able to move to the following steps with the guidance of your healthcare professional.<sup>2</sup>

Most children will start on step 1, but if your child is already eating foods on the ladder, you'll be advised which step you should start on.

The ladder has several steps, but your healthcare professional may adjust the number of steps to suit your child. The time spent on each step will depend on how your child responds and this can also be discussed with your healthcare professional.

As your child can tolerate the food at each step, you'll be able to move to the next step while continuing to feed foods from the previous steps. If your child shows an allergic reaction at any step, you'll go back to the food on the step before.

### References:

1. Healthcare Professional Factsheet. A clinician's guide to using the iMAP guideline. Accessed Oct 2020. Available at [https://gpifn.files.wordpress.com/2019/10/imap-additional\\_tool\\_for\\_hcps-5rm\\_-tb\\_original.pdf](https://gpifn.files.wordpress.com/2019/10/imap-additional_tool_for_hcps-5rm_-tb_original.pdf)
2. Luyt D et al. BSACI guideline for the diagnosis and management of cow's milk allergy. *Clinical & Experimental Allergy*. 2014;44:642-672. doi: 10.1111/cea.12302
3. iMAP treatment algorithm. May 2019. Accessed Oct 2020. Available at: <https://gpifn.files.wordpress.com/2019/10/imap-treatment-algorithm.pdf>
4. The iMAP Milk Ladder. October 2016. [https://gpifn.files.wordpress.com/2019/10/imap\\_final\\_ladder-may\\_2017\\_original.pdf](https://gpifn.files.wordpress.com/2019/10/imap_final_ladder-may_2017_original.pdf) Accessed: Oct 2020.
5. Ball H, Luyt D Homebased cow's milk reintroduction using a milk ladder in children less than 3 years old in IgE mediated cow's milk allergy. *Clinical Exp Allergy* 2019

### Allergy UK Helpline

Mon-Fri, 9am-5pm:

Call: 01322 619 898

Email: [info@allergyuk.org](mailto:info@allergyuk.org)

Visit us at:

**Allergyuk.org**



# YOUR BABY'S COW'S MILK ALLERGY JOURNEY

## Milestone 8: Outgrowing cow's milk allergy

### Will my child outgrow cow's milk allergy?

Fortunately, sensitivity to cow's milk decreases with age<sup>1</sup> as most children outgrow their cow's milk allergy.<sup>2</sup> Children with delayed reaction cow's milk allergy are likely to outgrow their allergy more quickly than those with immediate onset<sup>3</sup>, while it may take longer for children with immediate onset cow's milk allergy.<sup>3</sup> The speed with which allergies resolve varies from child to child,<sup>2</sup> but most children will outgrow their cow's milk allergy by the time they are five years old.<sup>4</sup>

### What can I do to help manage my child's allergy?

Remember that getting your child back to cow's milk may help them outgrow their allergy sooner and assists their growth and development.<sup>1</sup> You can support this by following the milk ladder for delayed milk allergy in conjunction with healthcare advice, step by step, until your child can tolerate fresh cow's milk without a reaction.<sup>2</sup> For children with immediate milk allergy this must be guided by a healthcare professional, such as an allergy doctor/nurse or dietitian and a different process to the milk ladder will be used. For some children, this may be a slow process but keeping any milk protein they can tolerate in the diet every day will help. A broad range of foods in the diet is also important to support overall health.

### My child is over five and has an ongoing milk allergy. What is the likelihood they will outgrow the milk allergy?

For some children, especially if they have an immediate milk allergy (IgE), it may have been decided that they continue to exclude milk from their diet for safety reasons or because they have not been able to tolerate baked milk. There is evidence in research to indicate that some children go on to outgrow their milk allergy, even in their teenage years.<sup>5</sup> It is important to continue

to have your child reviewed at medical appointments to check tolerance, nutrition and further possible pathways.

### What support is there for older children with food allergies?

If your child is older with a milk allergy then you will want to support your child in dealing with their allergy and encouraging independence.

Perhaps they are moving to secondary school and you both need ideas on how to navigate and support this process: Starting a new school with allergy.

A review of your child's management plan continues to be important for immediate IgE food allergy, an example of a management plan for immediate food allergy would be from BSACI: Paediatric Allergy Action Plans.

On occasions, your older child may be worried and in need of support to deal with their food allergy. This Factsheet, written by a psychologist, offers some suggestions to support your child's anxiety or top tips for older students.

### Most children will outgrow their allergy

“

This is something we parents naturally hope for, but remember that all babies are different. Try to stay positive and use this Roadmap to help guide you through the journey and always talk to a dietitian or your consultant if you need more advice and support.

- **Nathalie Newman,**  
Allergy mum and advocate

### The Milestones:

- 1 [Managing cow's milk allergy](#)
- 2 [Feeding a child with CMA](#)
- 3 [Gut health in babies & children](#)
- 4 [The future and allergies](#)
- 5 [Weaning](#)
- 6 [Re-introduction of cow's milk](#)
- 7 [The milk ladder](#)
- 8 **[Outgrowing cow's milk allergy](#)**

### Allergy UK Helpline

Mon-Fri, 9am-5pm:

Call: 01322 619 898

Email: [info@allergyuk.org](mailto:info@allergyuk.org)

Visit us at:

**Allergyuk.org**

# YOUR BABY'S COW'S MILK ALLERGY JOURNEY

## Milestone 8: Outgrowing cow's milk allergy

### How can I support my child's diet if they are older whilst on a milk free diet?

You may be concerned about whether their diet is properly balanced for an older child and here are a few key pointers. Encourage a wide range of foods to support the gut and overall health:

**Protein** can be found in many other foods like meat, fish, egg or vegetable proteins (lentils, chickpeas or beans) and often can be met easily if having a varied diet despite being milk free.

**Calcium** is needed for health and bones. From one to three years old calcium requirements are 350mg which can be achieved in around 300ml (10oz) of fortified alternative milk or yoghurt. From four to 10 years of age, requirements are around 500mg daily and from 11 to 18 years old calcium requirements rise to 800-1000mg. Fortified alternative milks or yoghurt usually provide 120mg per 100ml. Other good sources include fortified breads, cereals, oily fish, broccoli and oranges. It may not be possible to reach the recommended calcium requirements by diet alone. There are a wide range of age-appropriate calcium supplements available from chemists and supermarkets. Do check the ingredients and seek a full diet assessment from a dietitian to support your child.

**Vitamin D** helps support calcium absorption and it is recommended to take a supplement containing 10mcg per day.

**Iodine** is important for growth and



metabolism. Not all alternative milks are fortified with this so look for ones that are. Other good dietary sources include fish and shellfish.

### Are there any new interventions on the horizon for persistent immediate milk allergy?

Research continues to find ways to help children outgrow food allergies. Immunotherapy is one option that we hope will be available to children with persistent immediate (IgE) milk allergy in the future. Immunotherapy is often referred to as 'desensitisation' and it is a unique treatment for allergic diseases. It involves

giving increasing doses of the allergen at regular intervals (starting with a very small dose) in a carefully controlled way. It may be possible to teach the immune system to tolerate the allergen and not 'fight' it. All immunotherapy carries a degree of risk and it is time-consuming. It can only be undertaken by allergy centres that have extensive experience with immunotherapy. This approach to food desensitisation is mainly in the research stage, but it does provide hope for those at risk of severe food allergic reactions. Learn overall information about immunotherapy [here](#).

### References:

1. Flom J, Sicherer S. Epidemiology of Cow's Milk Allergy. *Nutrients* 2019;11:1051. doi:10.3390/nu11051051
2. Luyt D et al. BSACI guideline for the diagnosis and management of cow's milk allergy. *Clinical & Experimental Allergy*. 2014;44:642-672. doi: 10.1111/cea.12302
3. Schoemaker et al. Incidence and natural history of challenge-proven cow's milk allergy in European children – EuroPrevall birth cohort. *Allergy* 2015;70:963-972. DOI:10.1111/all.12630
4. Bergmann R. et al. The allergy march: from food to pollen. *Environmental Toxicology and Pharmacology*. 1997;4:79-83.
5. Spergel J. Natural history of cow's milk allergy. *J Allergy Clin Immunol* 2013;131:813-4.

### How do I get more support?

Remember to stay positive, think healthy and persevere on your journey.

If things feel difficult or overwhelming, reach out to family, healthcare professionals and the helpful links we've provided across these Milestones.

We're also here to help, so please call us for a chat or advice, on the Allergy UK Helpline:

**Monday to Friday, 9am to 5pm 01322 619 898 or email: [info@allergyuk.org](mailto:info@allergyuk.org)**

### Allergy UK Helpline

Mon-Fri, 9am-5pm:

Call: 01322 619 898

Email: [info@allergyuk.org](mailto:info@allergyuk.org)

Visit us at:

**Allergyuk.org**

# YOUR BABY'S COW'S MILK ALLERGY JOURNEY

Thank you to all of our contributors who made this resource possible

## Acknowledgements

The contents of this Roadmap have been developed by the Allergy UK Clinical team:

Laura Phillips, Clinical Dietetic Advisor, Allergy UK

Amena Warner RN. SN. (PG Dip) Specialist Practice. Dip Allergy, Allergy UK

Externally reviewed by:

Dr Helen Evans-Howells - GP WER Allergy

Heidi Ball - Specialist Allergy Dietitian, BSc (Hons) SRD

Dr Gary Stiefel - BmedSci, MBChB, MSC (allergy), MRCPCH.

All our external peer reviewers gave their time free of charge.

With thanks to Nathalie Newman, allergy mum and advocate, for her valuable contribution.

Made possible with support from Mead Johnson Nutrition.

**The information in this toolkit has been prepared by Allergy UK and peer reviewed by leading experts in cow's milk allergy. It is designed to be a helpful resource to explain further the types of milestones your child may reach after a diagnosis of cow's milk allergy. The guidance provided is based on current best practice, but please note that it is subject to change in the light of new relevant information and it does not replace medical/clinical advice. Always speak to your healthcare professional about any concerns you may have about managing the needs of a child with cow's milk allergy.**

## Allergy UK Helpline

Mon-Fri, 9am-5pm:

Call: 01322 619 898

Email: [info@allergyuk.org](mailto:info@allergyuk.org)

Visit us at:

**Allergyuk.org**



Published 2021. The information in this toolkit has been prepared by Allergy UK and peer reviewed by leading experts in cow's milk allergy. It is designed to be a helpful resource to explain further the types of milestones your child may reach after a diagnosis of cow's milk allergy. The guidance provided is based on current best practice, but please note that it is subject to change in the light of new relevant information and it does not replace medical/clinical advice. Always speak to your healthcare professional about any concerns you may have about managing the needs of a child with cow's milk allergy.

Allergy UK is the operational name of The British Allergy Foundation, a charitable company limited by guarantee and registered in England and Wales, Company no: 4509293, Charity no: 1094231. Registered in Scotland. Charity no: SC039257.



#ItsTimeToTakeAllergySeriously  
[www.allergyuk.org](http://www.allergyuk.org)